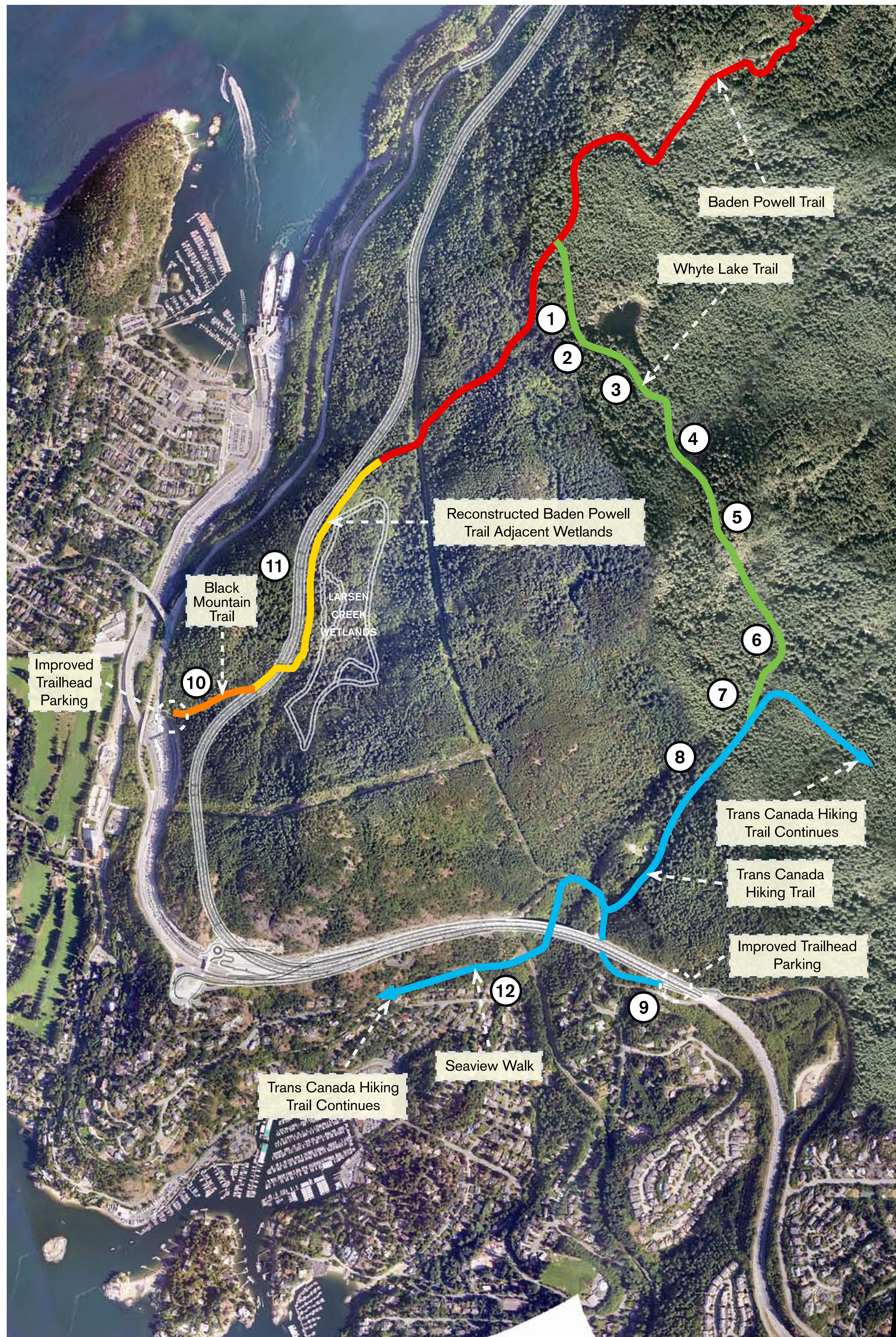
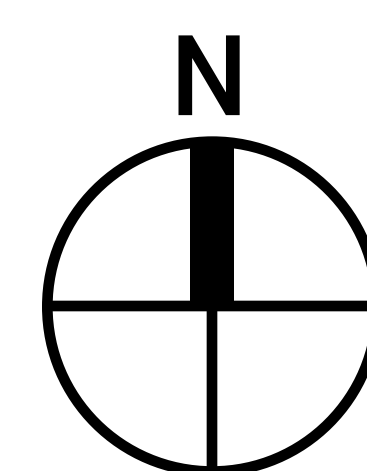


# Baden-Powell and Area Trail Plan

The Sea-to-sky Highway Improvement Project and the District of West Vancouver (including trail users) have considered options for relocation and improvement of trails. Trail management options have been considered that will benefit West Vancouver residents, North Shore residents at large, as well as others in the GVRD who regard the Baden Powell Trail and Trans Canada Hiking Trails as significant elements of the regional recreation trail system.



- Existing Baden Powell (BP) Trail
- Reconstructed Baden Powell Trail
- Trans Canada Hiking Trail
- Whyte Lake Trail
- Black Mountain Trail



## Photos of Existing Trail Conditions & Description of Upgrades



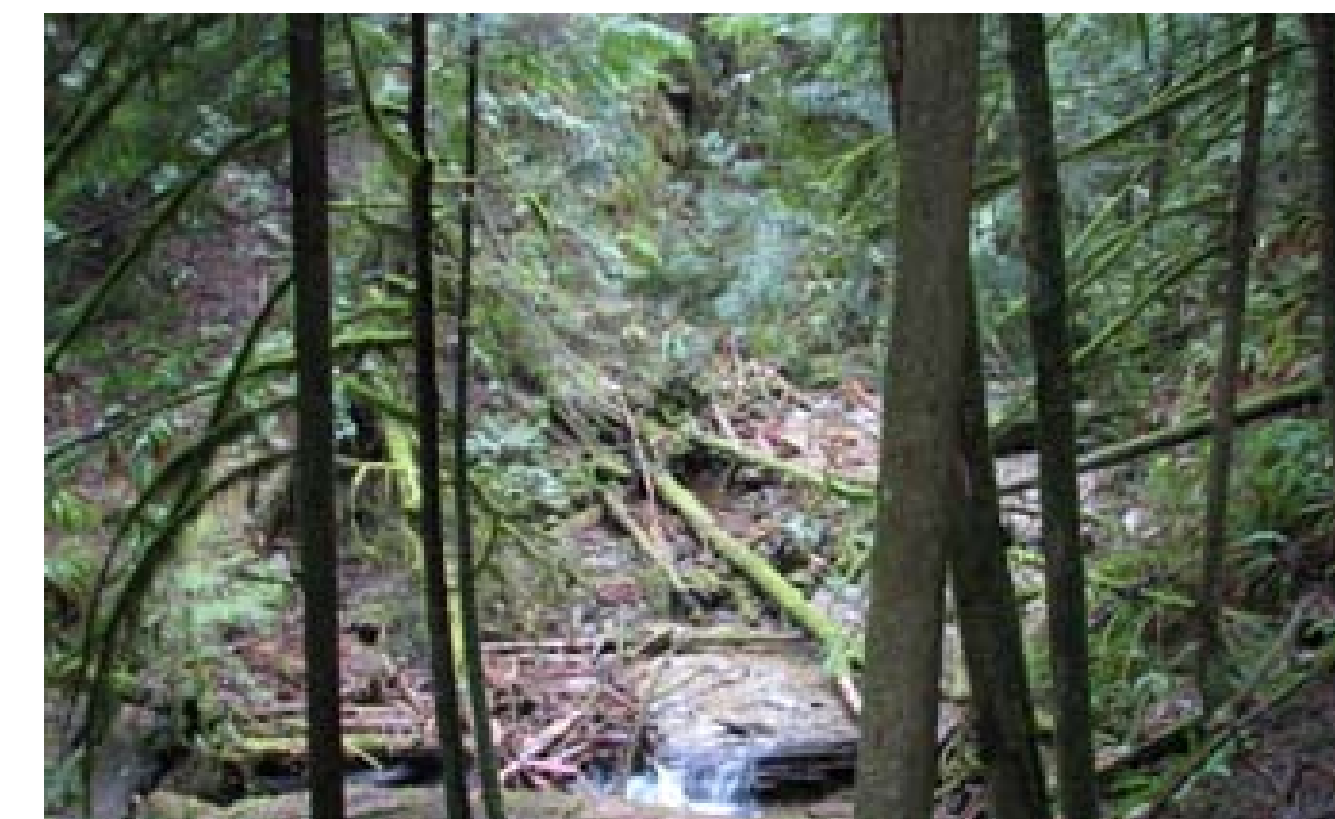
- 1. Whyte Lake**
- The Nelson Creek – Whyte Lake trail will be upgraded to a BC Parks Type III (0.75m tread, local material surface, and maximum 15% grade) trail standard with creek crossings.
  - The upgraded trail will tie in to the Black Mountain/Baden Powell Trail with signage at Whyte Lake.



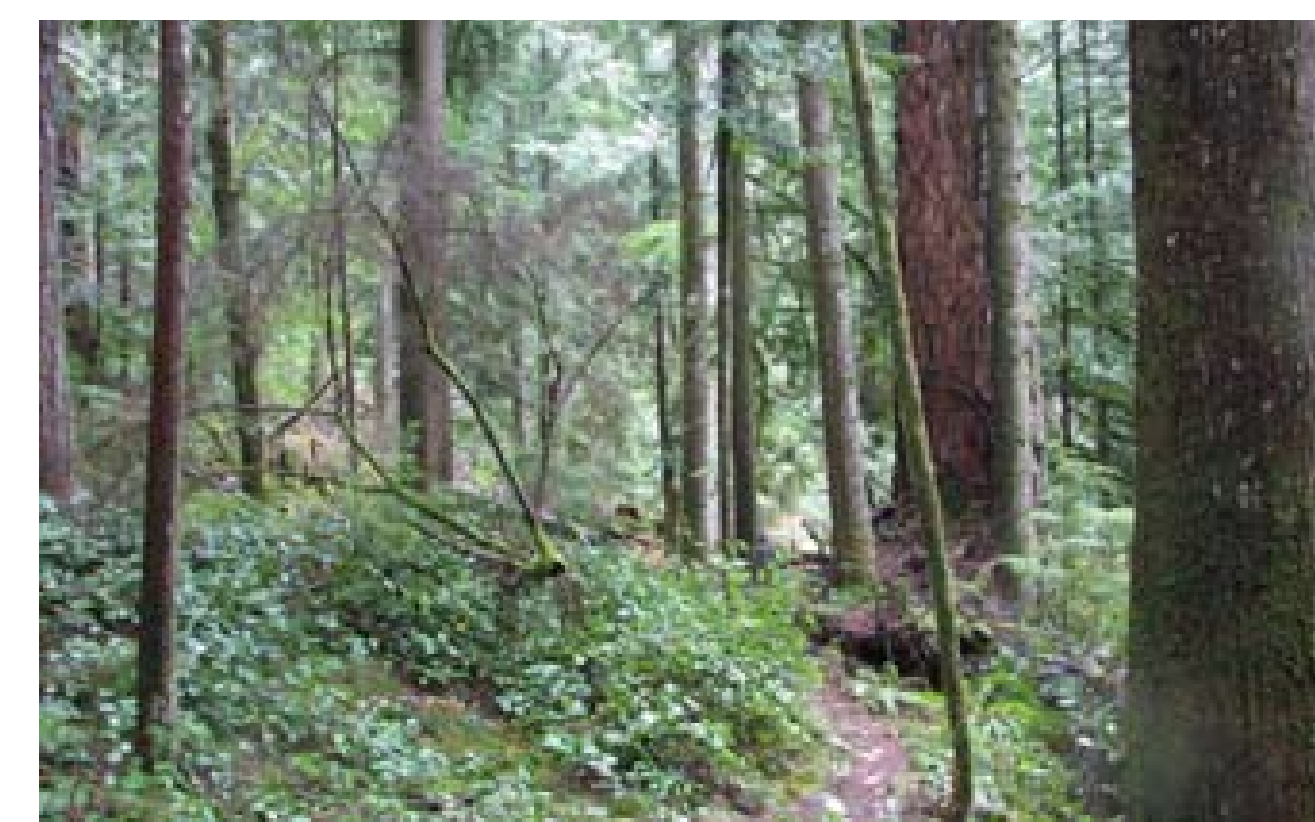
- 2. Saturated area between Whyte Lake and boardwalk**
- This area is subject to seasonal ground saturation and will require drainage improvements.
  - A boardwalk is proposed for this section of trail.



- 3. Boardwalk**
- Replace timber deck over low wetted area.



- 4. Trail in close proximity to Whyte Creek**
- The trail will be moved upslope and out of the riparian area of Nelson Creek.
  - It will be stabilized at this new location to minimize the potential for future erosion.



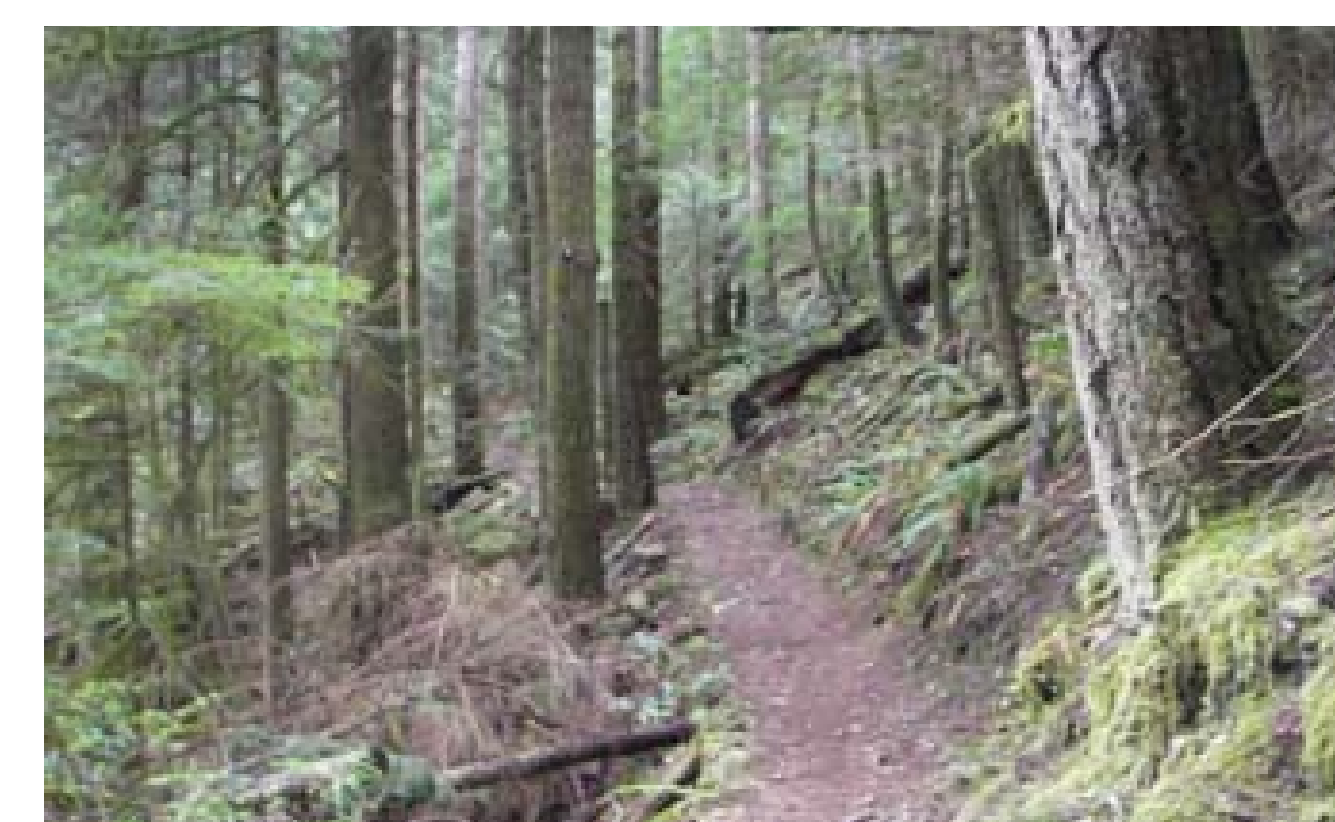
- 5. General upgrades**
- At this location, the trail will be upgraded to a BC Parks Type III (0.75 m tread, local material surface, and maximum 15% grade) trail standard.



- 6. Bridge crossing**
- Replace existing bridge crossing with a new bridge.



- 7. Trail near top of Nelson Creek Bank**
- Provide a railing on the drop-off edge of the trail.



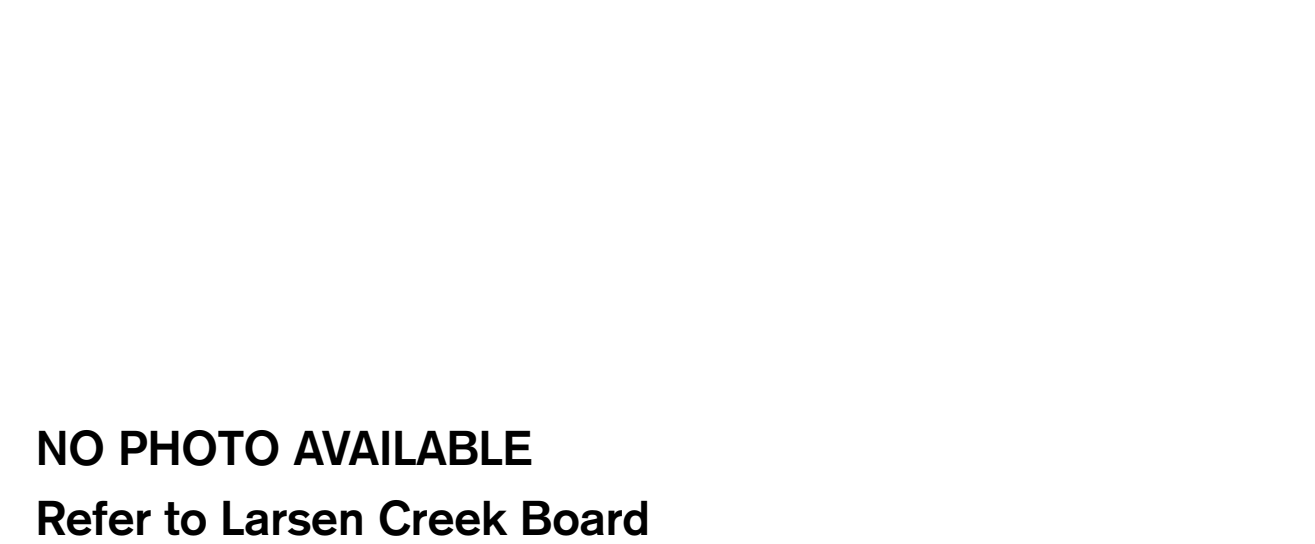
- 8. General upgrades**
- At this location, the trail will be upgraded to a BC Parks Type III (0.75 m tread, local material surface, and maximum 15% grade).



- 9. Trans Canada Hiking Trailhead at Westport Road**
- The trailhead will be encouraged as Trans Canada Hiking Trail access, Nelson Canyon Park access, and Baden-Powell Trail access via the Nelson Creek-Whyte Lake route.
  - Improved parking for 20 cars at trailhead.



- 10. Black Mountain Trail relocation and parking area**
- Safe access/egress for vehicles will be provided at this location.
  - The parking will be improved to accommodate 7 vehicles.



NO PHOTO AVAILABLE  
Refer to Larsen Creek Board



- 12. Seaview Walk**
- Upgrade east end access to Seaview Walk.

- 11. This section of trail will be rebuilt below the highway, adjacent the west side of the wetlands**