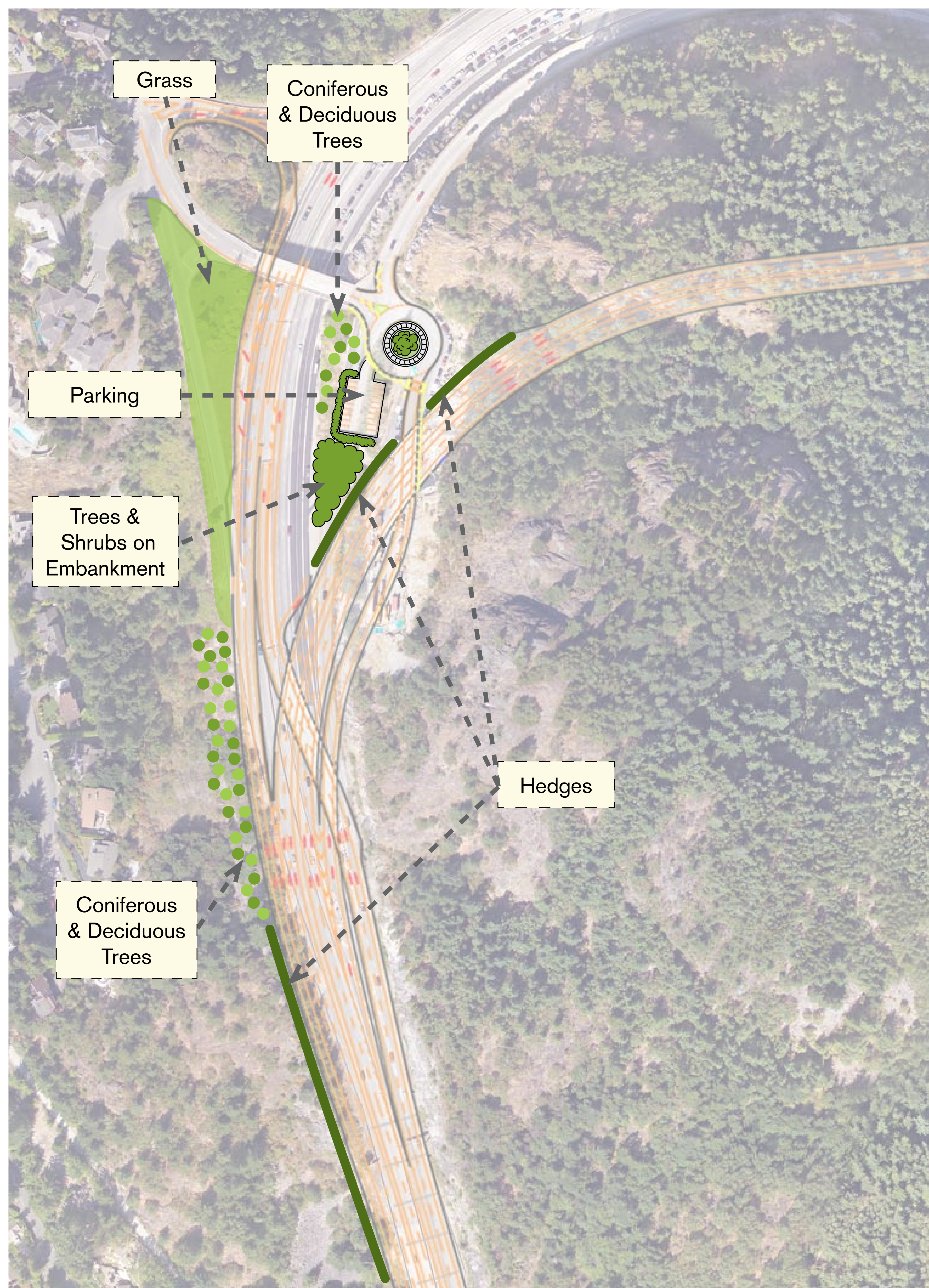


Landscape Options Eagleridge Parking

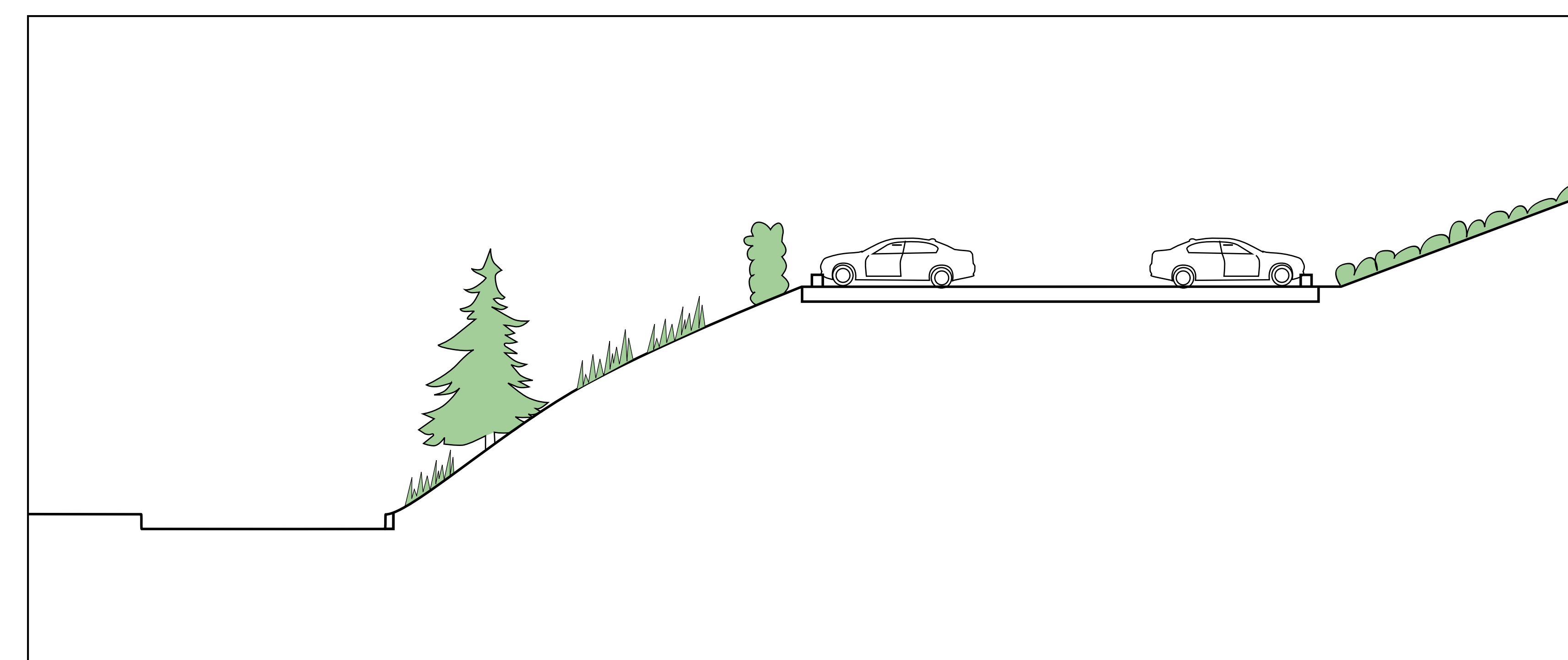
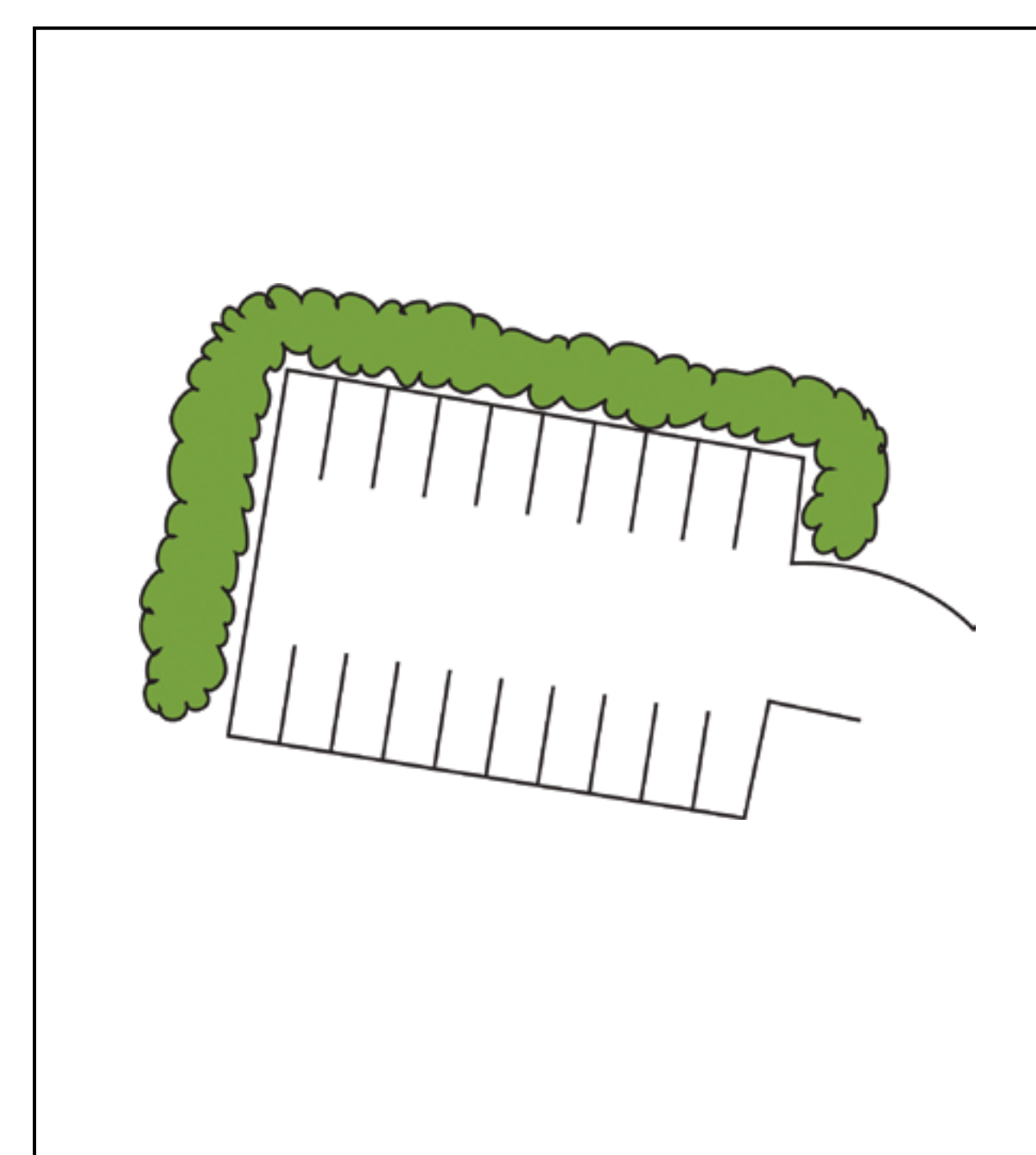


Parking Lot Screening

A new parking lot will be constructed to accommodate up to 20 cars at the east end of Eagleridge Drive. At the Eagleridge parking area there are two proposed landscape options.

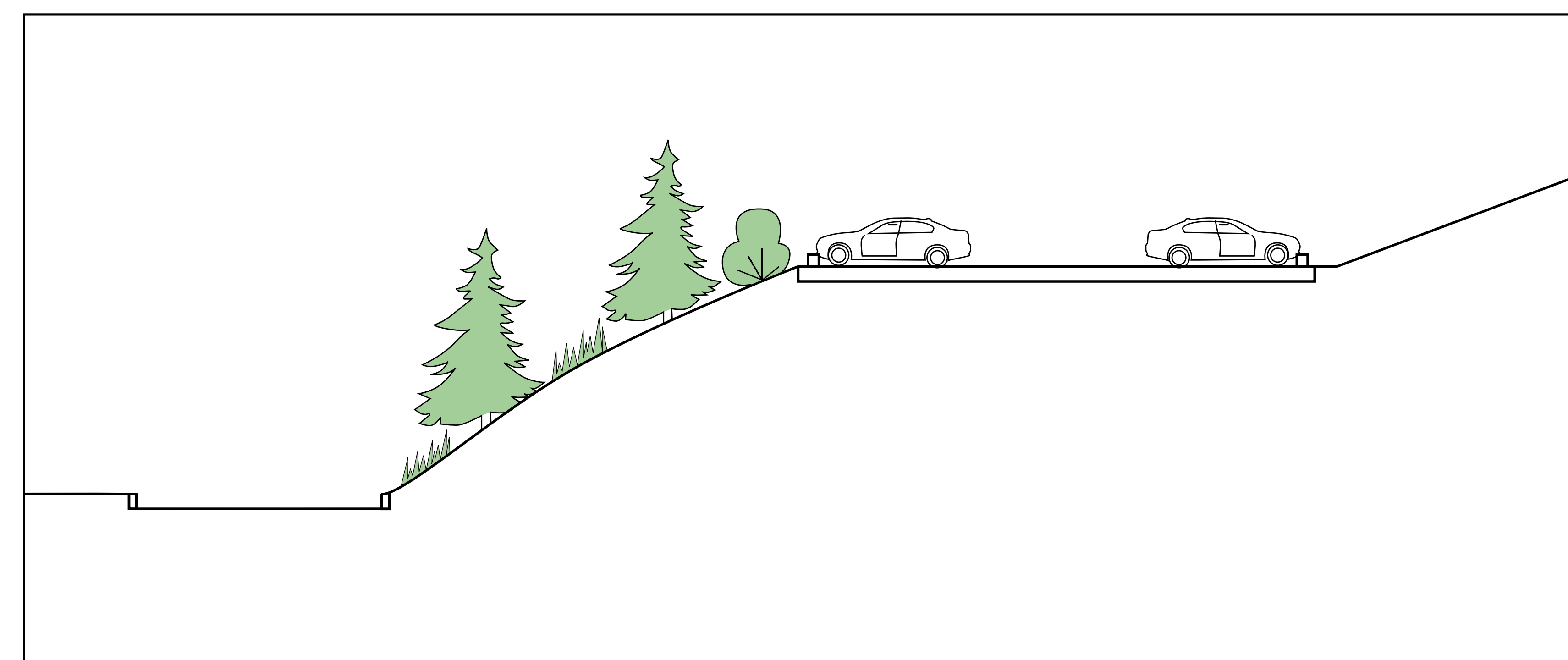
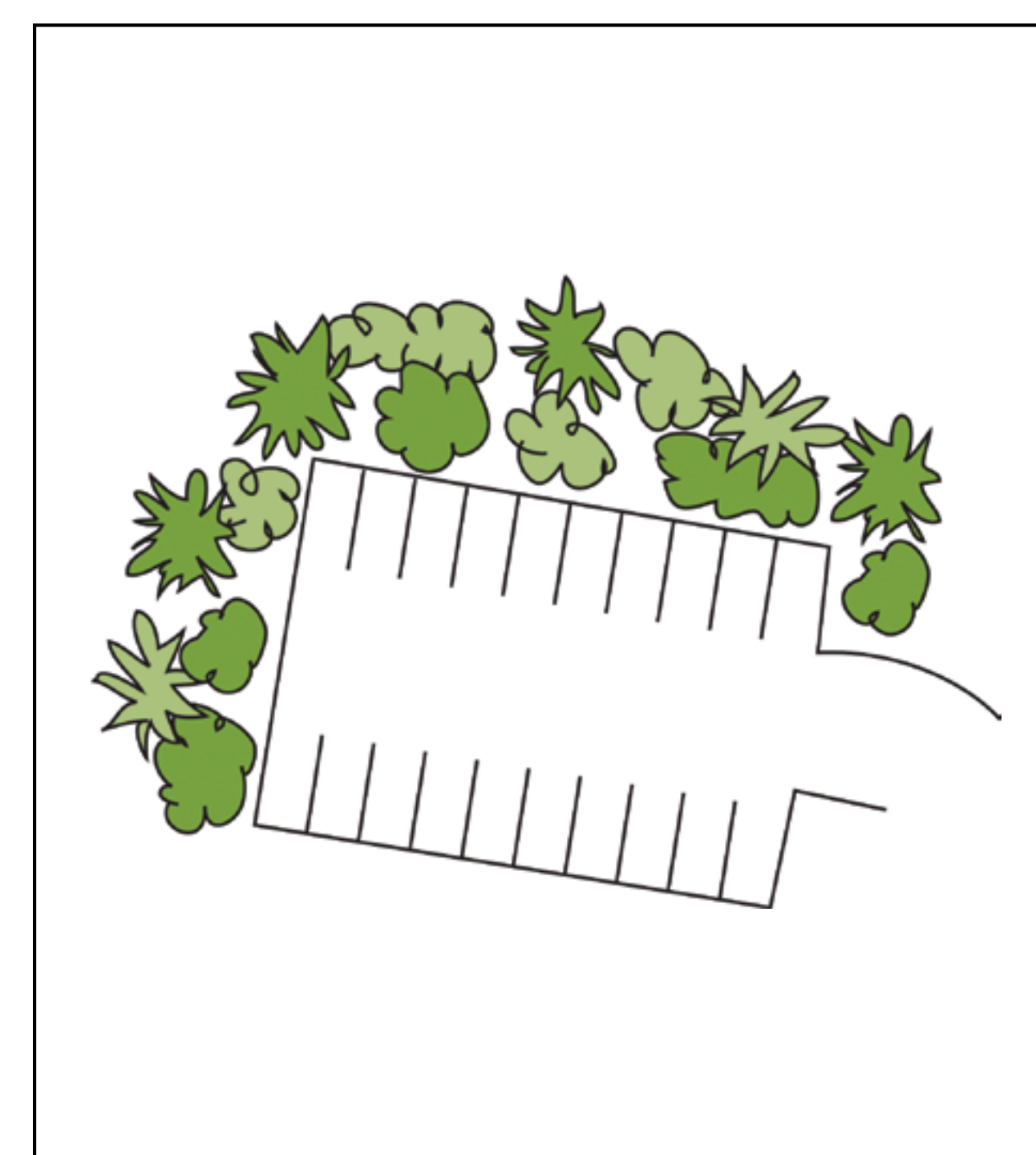
Option 1 – Hedge

Option 1 has a 1.2 to 1.5 metre high hedge around the parking lot to provide screening of the space between the parking lot and ferry traffic. The hedge gives an urban feel to the area.



Option 2 – Clusters of Trees & Shrubs

Option 2 provides a landscape slope around the parking lot, including clusters of trees and shrubs. This option treats the area with more natural vegetation.



sample plant list:

Following is a list of some of the plants that could be used on this project. The community will be consulted on selection of plants at the detailed design stage.

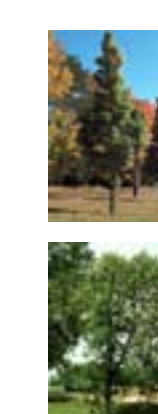
Trees



Red Alder



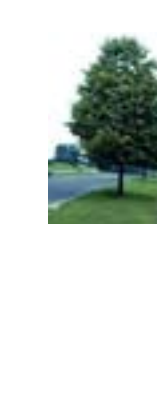
Big Leaf Maple



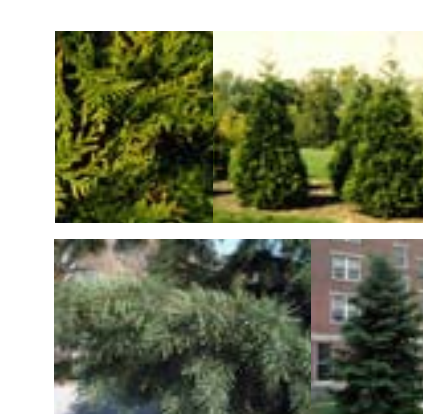
Columnar Maple



Green Ash



Linden

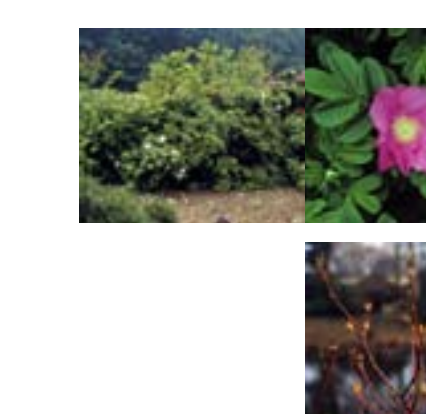


Western Red Cedar



Douglas Fir

Shrubs

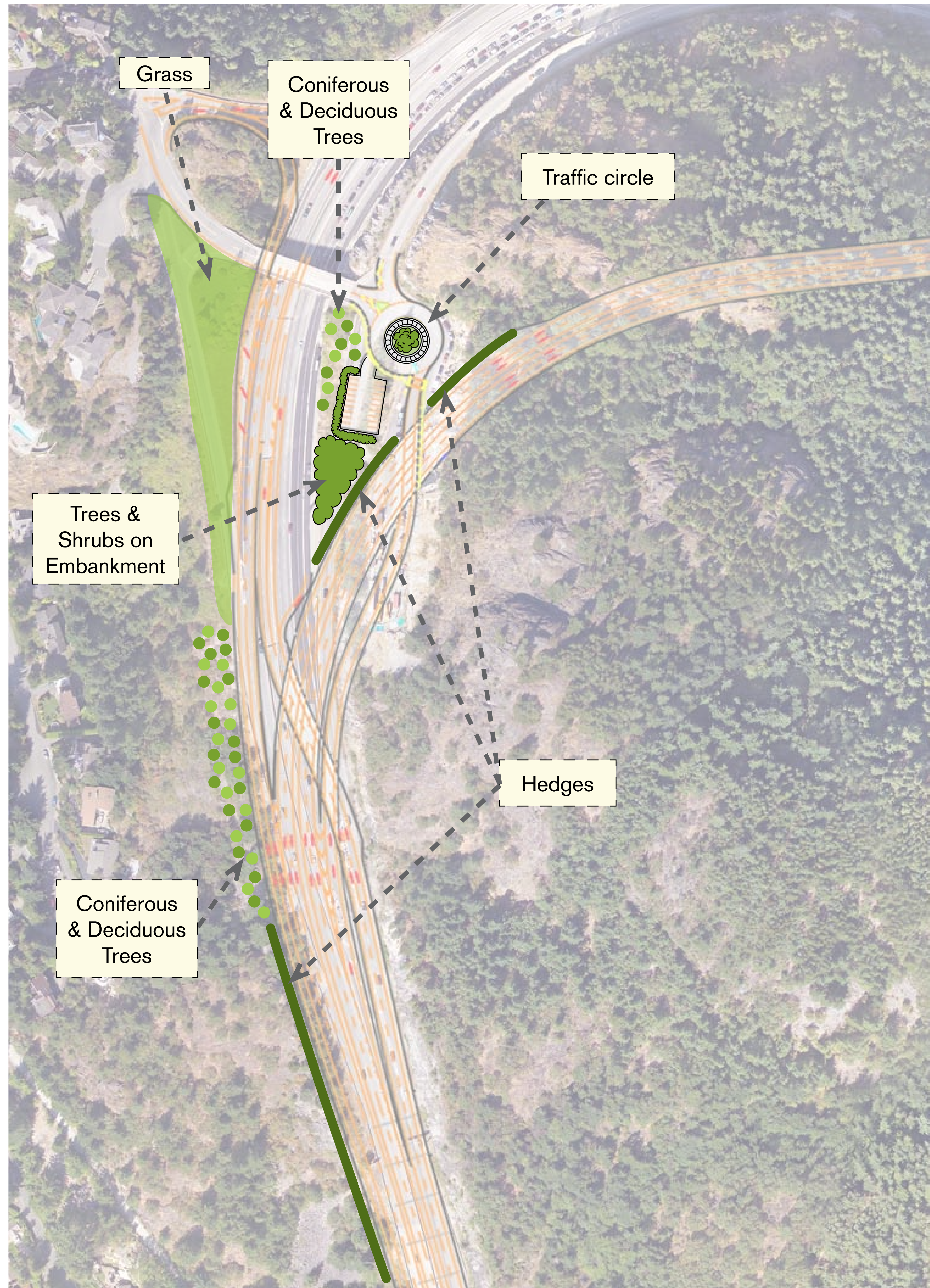


Rose



Redosier Dogwood

Landscape Options Traffic Circle

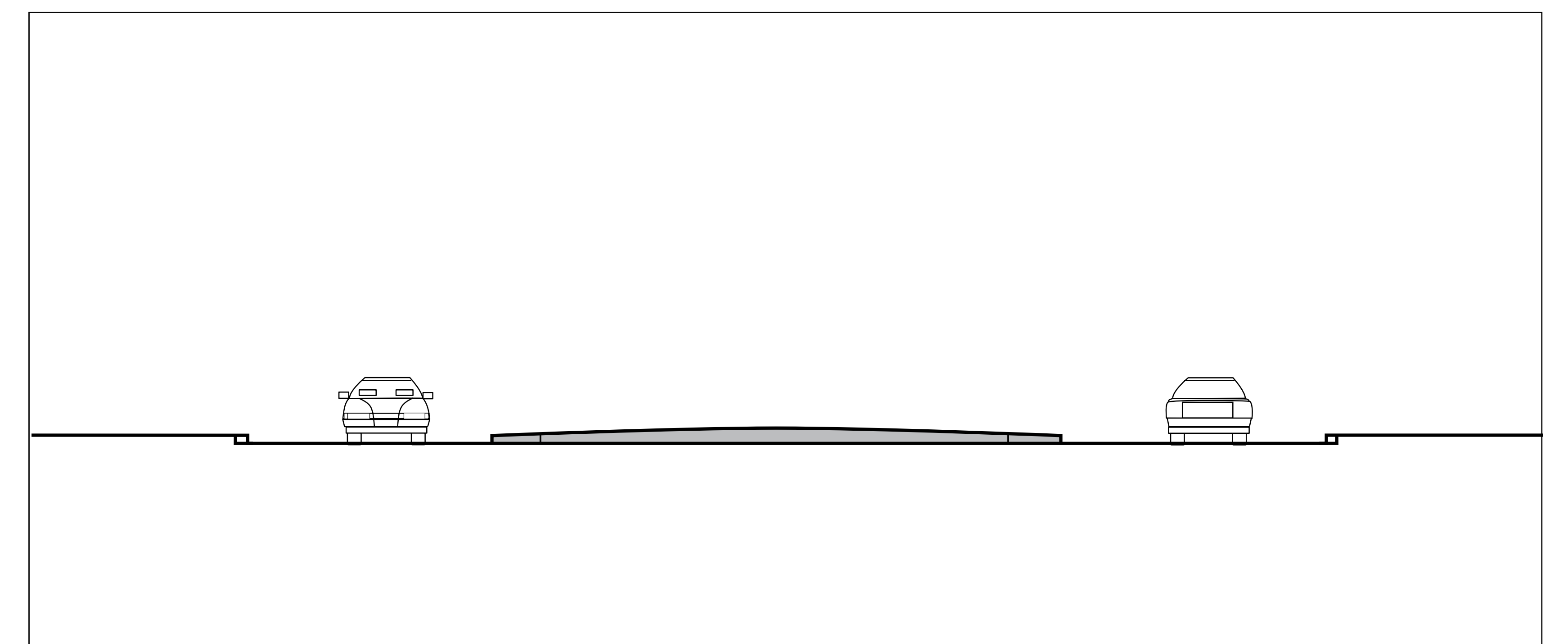
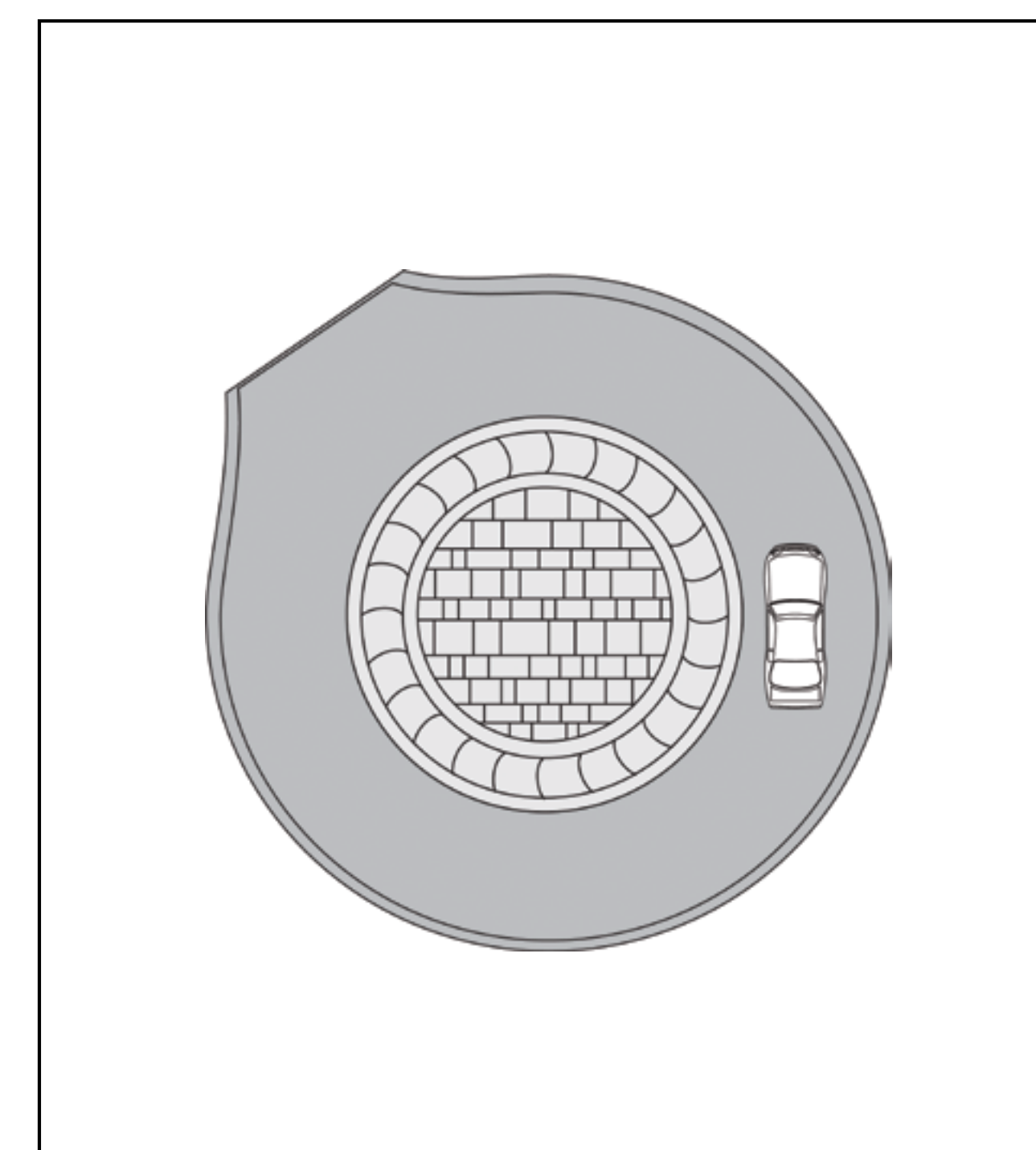


Traffic Circle

Two options are proposed for the Eagleridge Traffic Circle:

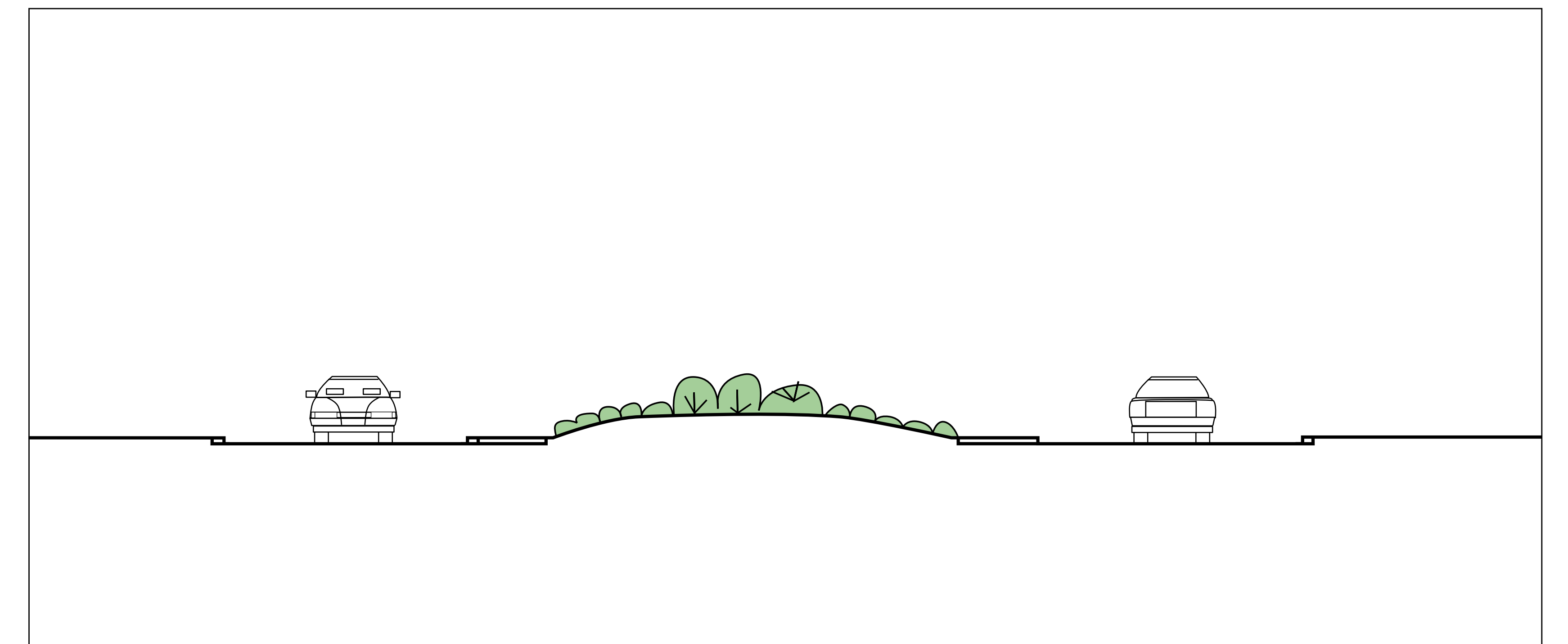
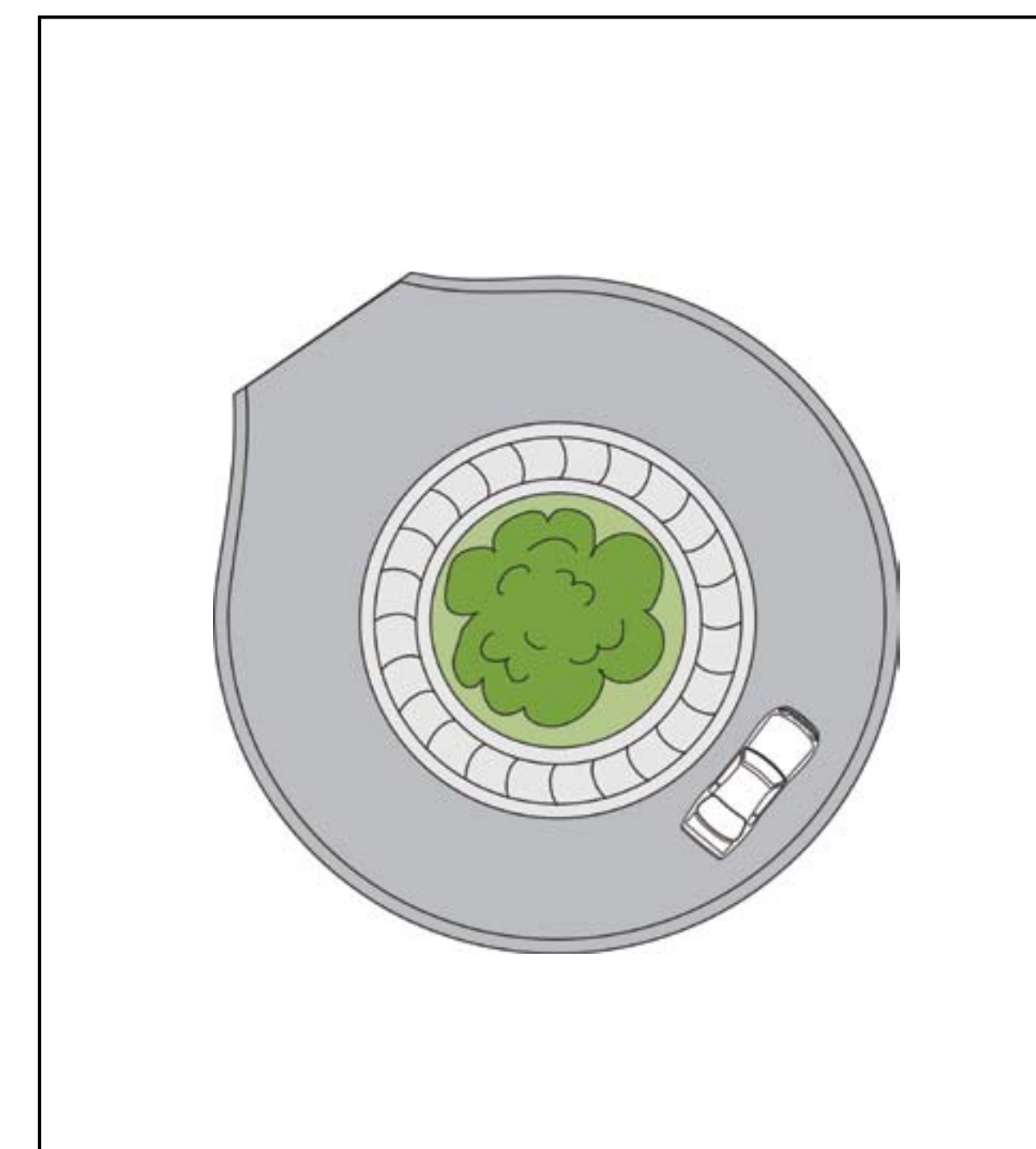
Option 1 – Stamped Concrete

Option 1 provides a stamped concrete pattern to the island in the middle, giving it an urban treatment and a hard surface.



Option 2 – Ground Cover & Low Shrubs

Option 2 is to plant with ground cover and low shrubs, providing a softer feel in contrast to the paving and bridge structures nearby.



sample plant list:

Following is a list of some of the plants that could be used on this project. The community will be consulted on selection of plants at the detailed design stage.

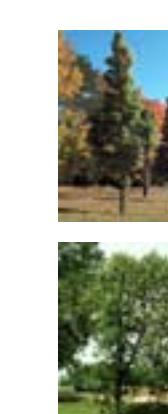
Trees



Red Alder



Big Leaf Maple



Columnar Maple



Green Ash



Linden

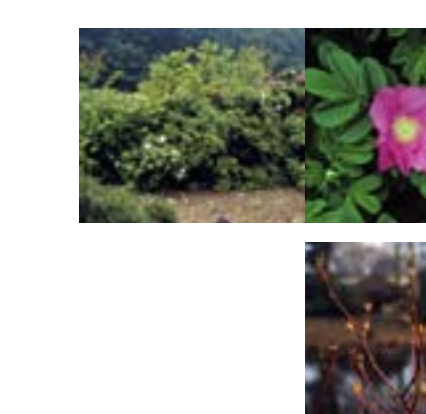


Western Red Cedar



Douglas Fir

Shrubs



Rose



Redosier Dogwood