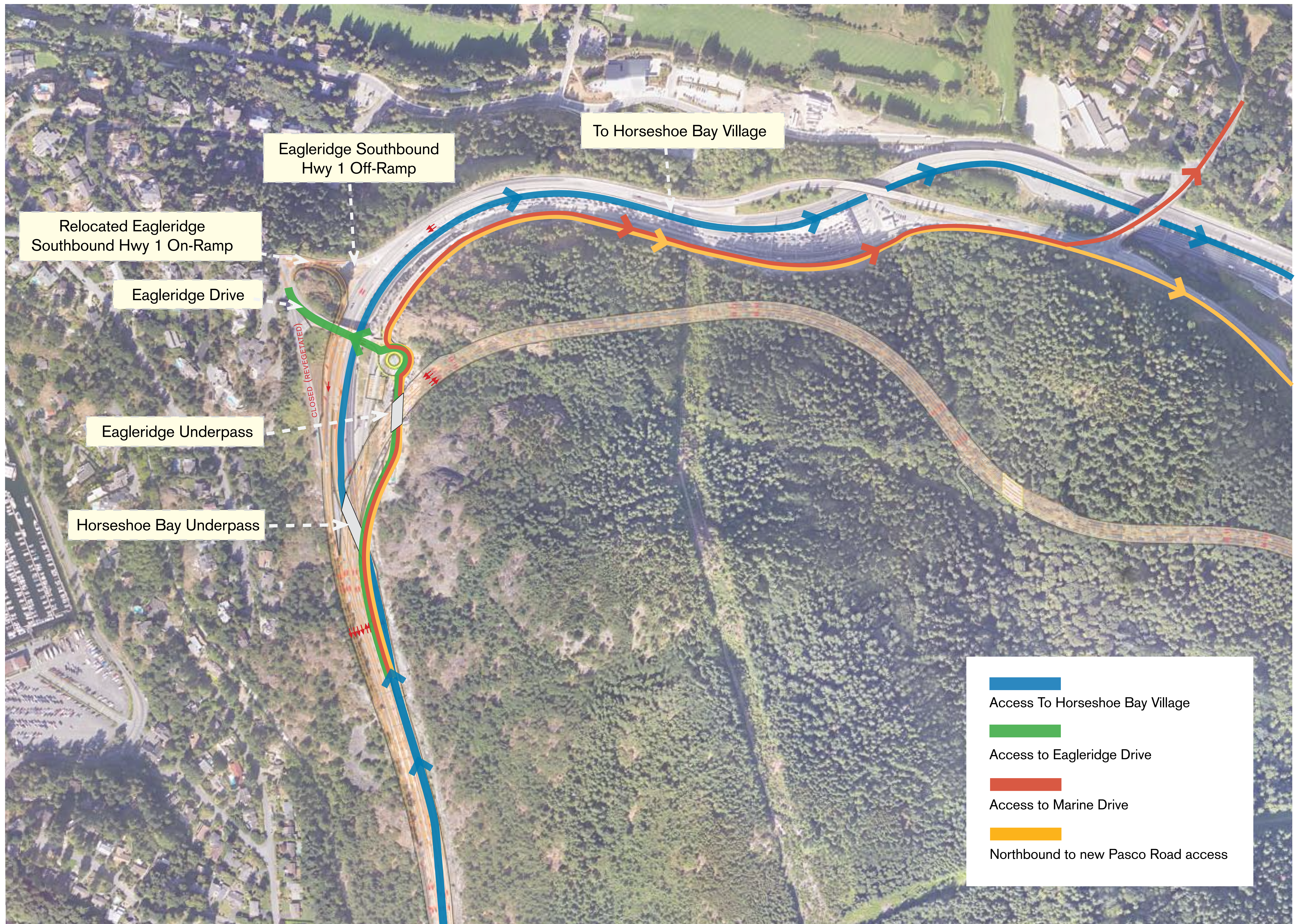


## Eagleridge Interchange – Local Traffic



### Eagleridge Residents

To travel to Horseshoe Bay, residents cross over at Eagleridge Drive, exit northward, cross back over the Horseshoe Bay overpass (Marine Drive) and travel into the village via Nelson Avenue.

To access Highway 1 southbound, residents will take the relocated southbound on-ramp immediately south of the Eagleridge Overpass.

### Marine Drive Residents

To travel north, Marine Drive residents drive westward by Gleneagles Golf Course, cross over the Horseshoe Bay Overpass (Marine Drive), turn north along the old highway, and merge onto Highway 99 (the new highway) at the North Junction.

To travel south, Marine Drive residents would cross over the Horseshoe Bay Overpass and turn south onto the on-ramp to Highway 1 going southbound.

### Horseshoe Bay Residents

To go south, drive out of Horseshoe Bay, along Highway 1 by the passenger ticket area. To go to Horseshoe Bay Village, take Marine Drive westward, and follow Nelson Avenue into Horseshoe Bay.

To go to Horseshoe Bay Village take the first exit to Horseshoe Bay Village, cross under Highway 99 (the new highway), and stay left.

### Greater Vancouver Residents – Traveling the Old Highway

To go north via the old highway, exit onto the Eagleridge exit, but continue northward instead of crossing to Eagleridge Drive, continue north via the old highway. This traffic will merge with Highway 99 (the new highway) at the North Junction.

This option could also take you into Horseshoe Bay Village if you cross over the Horseshoe Bay overpass and follow Nelson Avenue into Horseshoe Bay Village.