

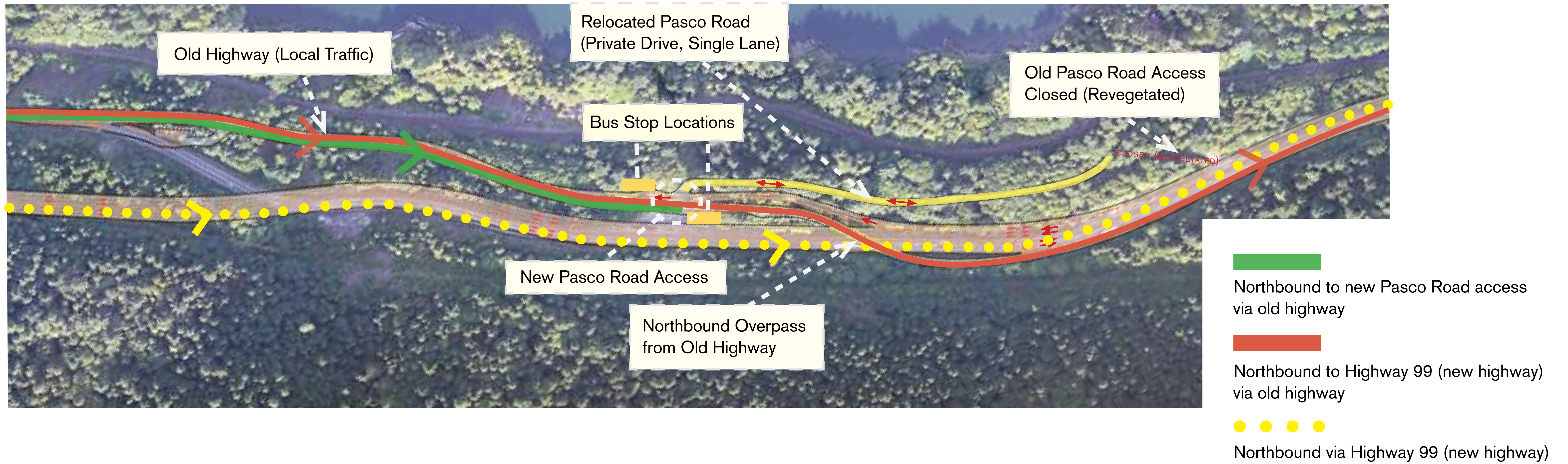
North Junction Traffic Movements

The North Junction refers to the junction of the old highway and Highway 99 (the new highway). It is at this junction that local traffic accesses the northbound overpass to Highway 99 from the old highway, and southbound traffic accesses the off-ramp from Highway 99 (the new highway) toward Horseshoe Bay, Eagleridge and Marine Drive via the old highway.

Pre-design participants asked that there be no encroachment upon Cypress Provincial Park. This has been accommodated by adjustments to the northbound overpass and constraining the alignment to the east edge, thereby avoiding the boundary of the Cypress Provincial Park.

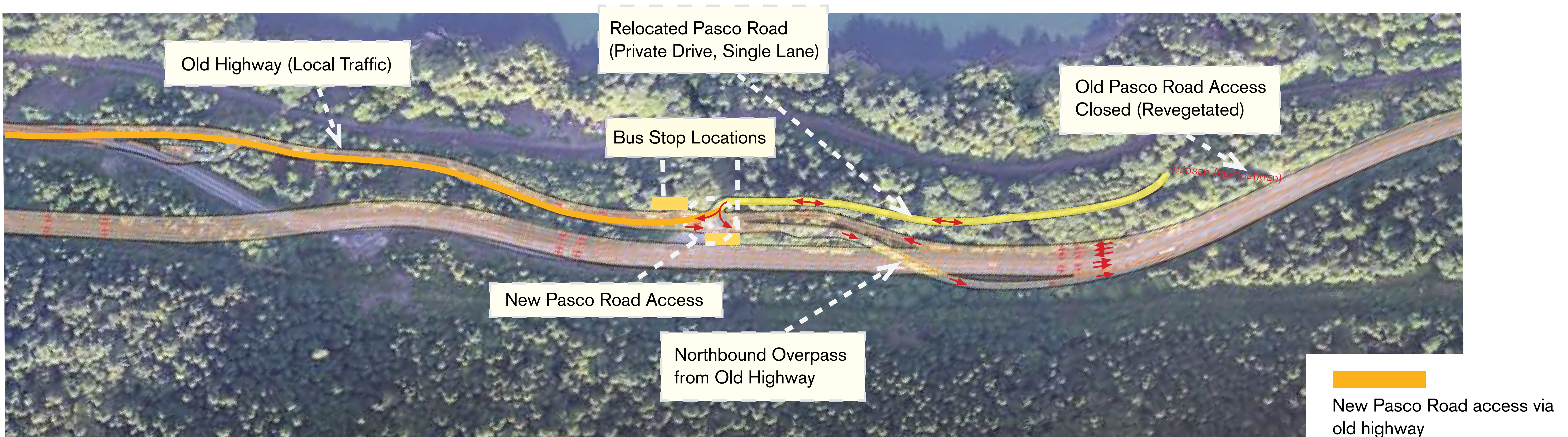
Northbound Through Traffic

Northbound local traffic will access Highway 99 (the new highway) via the northbound overpass. Southbound traffic from anywhere north of Pasco Road and heading to Horseshoe Bay, Eagleridge and Marine Drive will exit onto the old highway at this point.



Local Traffic

Traffic from the Pasco Road area will follow the old highway south and merge onto Highway 1 at the Eagleridge Interchange.



Ferry Traffic

Traffic heading south to the ferries will continue on to the Caulfeild exit, and return back northward on Highway 1 and take the ferries exit.

