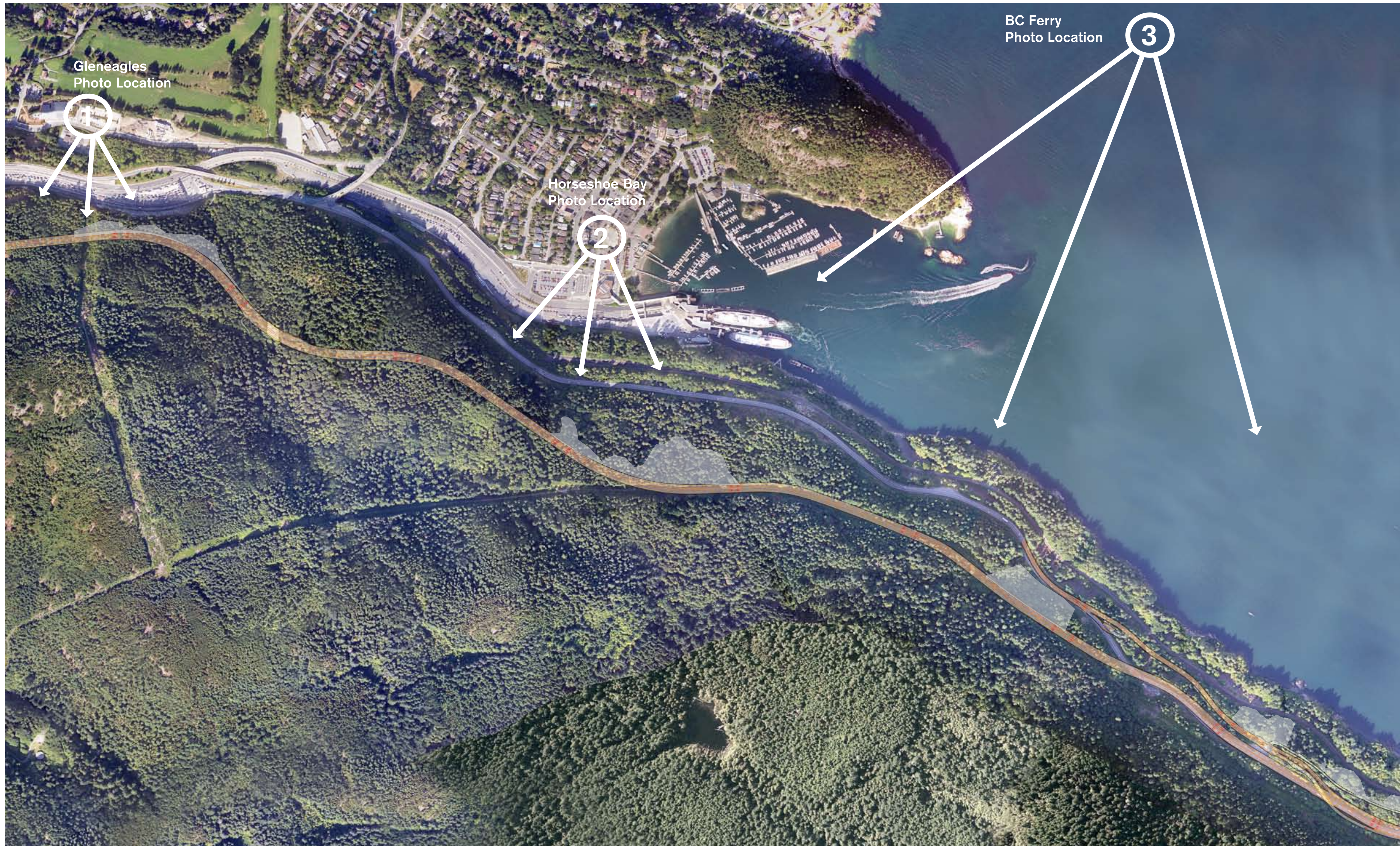


# Viewscape of Fills

## Rock Fill Slope Landscape Treatment

Viewscapes of visible portions of key rock fill slopes are shown below. Trees and shrubs will be planted, concentrated in the most visible areas.

Where topsoil is added, it is intended to fill most of the spaces in the rock. Over time, trees and shrubs will become established in these soil pockets.



## Post Construction



### Viewscape from Gleneagles – Option 1: Hedge

Computer visualization of highway improvements. Visible parts of rock-fill slopes to be re-vegetated with grass, trees and shrubs. Treatment: Hedge at base of retaining wall.



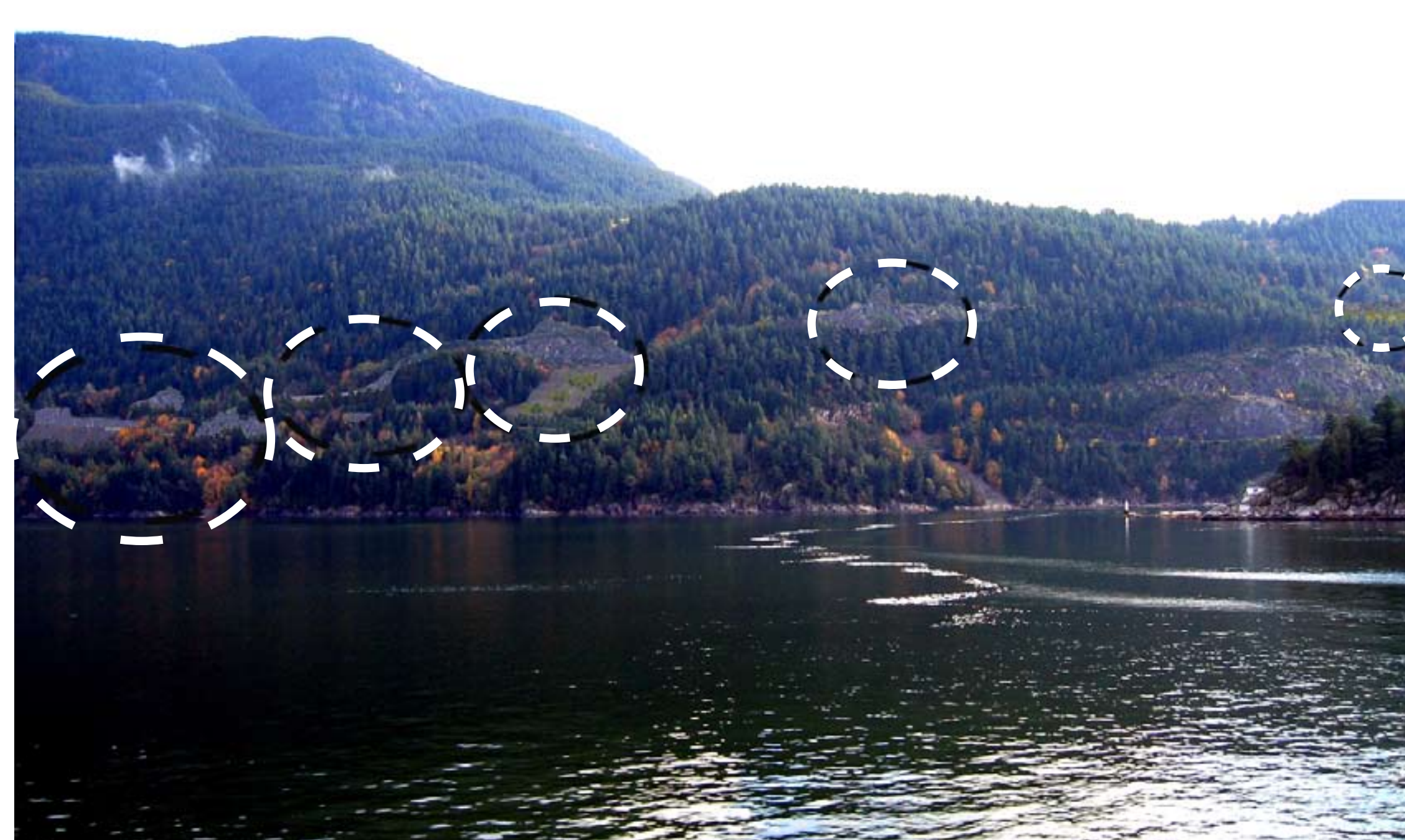
### Viewscape from Gleneagles – Option 2: Trees

Computer visualization of highway improvements. Visible parts of rock-fill slopes to be re-vegetated with grass, trees and shrubs. Treatment: Trees at base of retaining wall.



### Viewscape from Bay Street in Horseshoe Bay Village

Computer visualization of highway improvements. Visible parts of rock-fill slopes to be re-vegetated with grass, trees and shrubs.



### Viewscape from BC Ferry

Computer visualization of highway improvements. Large rock-fill slope to be re-vegetated with grass, trees and shrubs.